

For release 10:00 a.m. (EDT) Thursday, October 29, 2015

USDL-15-2086

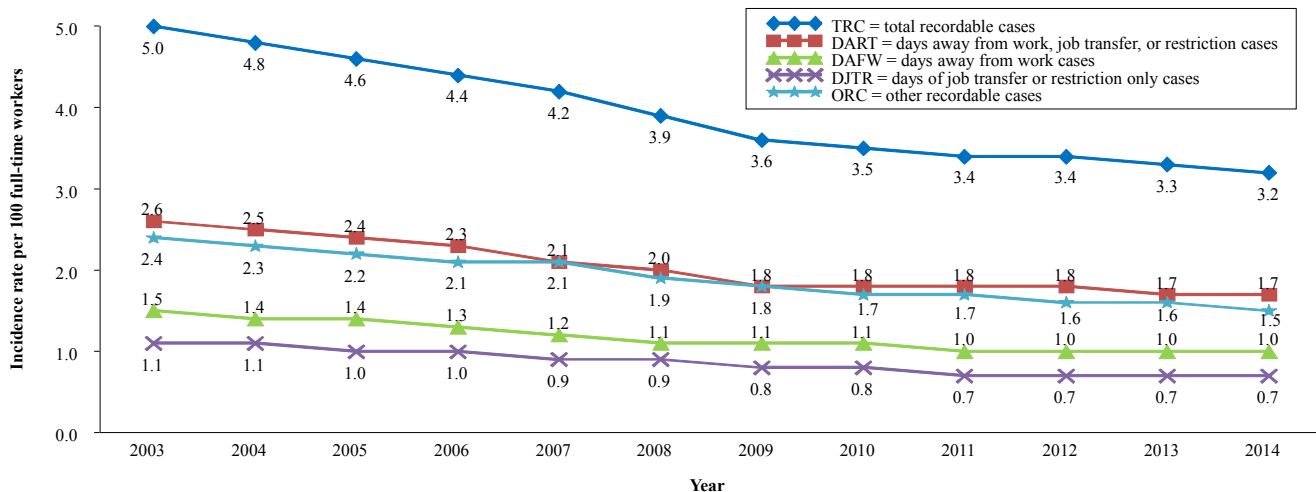
Technical information: (202) 691-6170 • IIFSTAFF@bls.gov • www.bls.gov/iif/oshsum.htm  
Media contact: (202) 691-5902 • PressOffice@bls.gov

## EMPLOYER-REPORTED WORKPLACE INJURIES AND ILLNESSES – 2014

The nearly 3.0 million nonfatal workplace injuries and illnesses reported by private industry employers in 2014 occurred at a rate of 3.2 cases per 100 equivalent full-time workers, according to estimates from the Survey of Occupational Injuries and Illnesses (SOII) conducted by the U.S. Bureau of Labor Statistics. (See tables 1 and 2.) The rate reported for 2014 continues a pattern of declines that, with the exception of 2012, occurred annually for the last 12 years.

Private industry employers reported nearly 54,000 fewer nonfatal injury and illness cases in 2014 compared to a year earlier. Because of this decline combined with an increase in reported hours worked, the total recordable cases (TRC) incidence rate fell 0.1 cases per 100 full-time workers. The fall in the TRC rate was driven by a decline in the rate of other recordable cases, as rates for both cases involving days away from work (DAFW) and for cases of job transfer or restriction only (DJTR) were unchanged in 2014.

Chart 1. Nonfatal occupational injury and illness incidence rates by case type, private industry, 2003-2014



### Change in Industry Classifications

Beginning with the 2014 reference year, the SOII began using the 2012 North American Industry Classification System (NAICS). Comparison of SOII estimates for 2014 to prior years is not advised below the sector level due to this change. For more detailed information regarding NAICS revisions, visit <http://www.bls.gov/bls/naics.htm>.

Among all private industry sectors, the rate of reported injuries and illnesses declined in 2014 only among the retail trade, health care and social assistance, and accommodation and food services sectors. Manufacturing continued a 17-year trend as the only private industry sector in which the rate of DJTR cases exceeded the rate of DAFW cases. The rates for these two case types were unchanged from a year earlier at 1.2 cases and 1.0 case per 100 full-time workers, respectively.

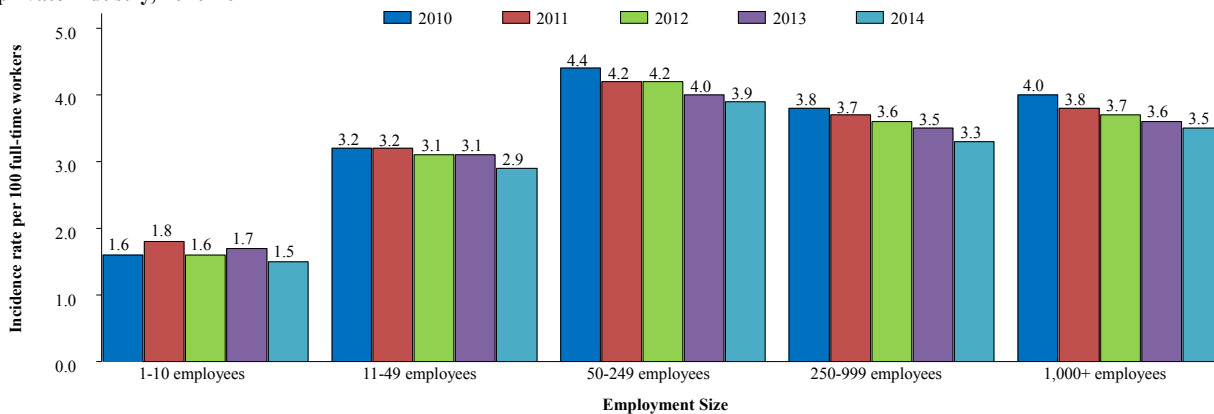
## Private Industry Injuries and Illnesses

### *Injuries and illnesses by type of case*

Over half of the nearly 3.0 million private industry injury and illness cases reported in 2014 involved days away from work, job transfer, or restriction (DART cases). These cases occurred at a rate of 1.7 cases per 100 full-time workers, unchanged from 2013. (See table 7.) The rates for the two components of DART cases—DAFW cases and DJTR cases—were also unchanged at 1.0 case and 0.7 cases per 100 workers, respectively. Other recordable cases—those not involving days away from work or days of job transfer or restriction—accounted for the remaining nearly 1.4 million injury and illness cases in 2014, lowering the rate by 0.1 cases to 1.5 cases per 100 full-time workers.

The TRC injury and illness incidence rate declined for each of the individual establishment size classes in 2014. The rate of injuries and illnesses remained highest among mid-size private industry establishments (employing 50 to 249 workers) and lowest among small establishments (employing fewer than 11 workers). (See table 3.)

**Chart 2. Total recordable nonfatal occupational injury and illness incidence rates by employment size, private industry, 2010-2014**



### *Injuries*

Of the nearly 3.0 million nonfatal occupational injuries and illnesses in 2014, 2.8 million (95.1 percent) were injuries. (See table 5.) Among injuries, nearly 2.1 million (75.0 percent) occurred in service-providing industries, which employed 82.4 percent of the private industry workforce. The remaining nearly 0.7 million injuries (25.0 percent) occurred in goods-producing industries, which accounted for 17.6 percent of private industry employment.

### *Illnesses*

Workplace illnesses accounted for 4.9 percent of the nearly 3.0 million injury and illness cases in 2014 and occurred at a rate of 15.3 cases per 10,000 full-time workers, down 1.3 cases from 2013. (See tables 6a and 6b.) Among individual illness categories, only the rate of reported skin diseases declined in 2014,

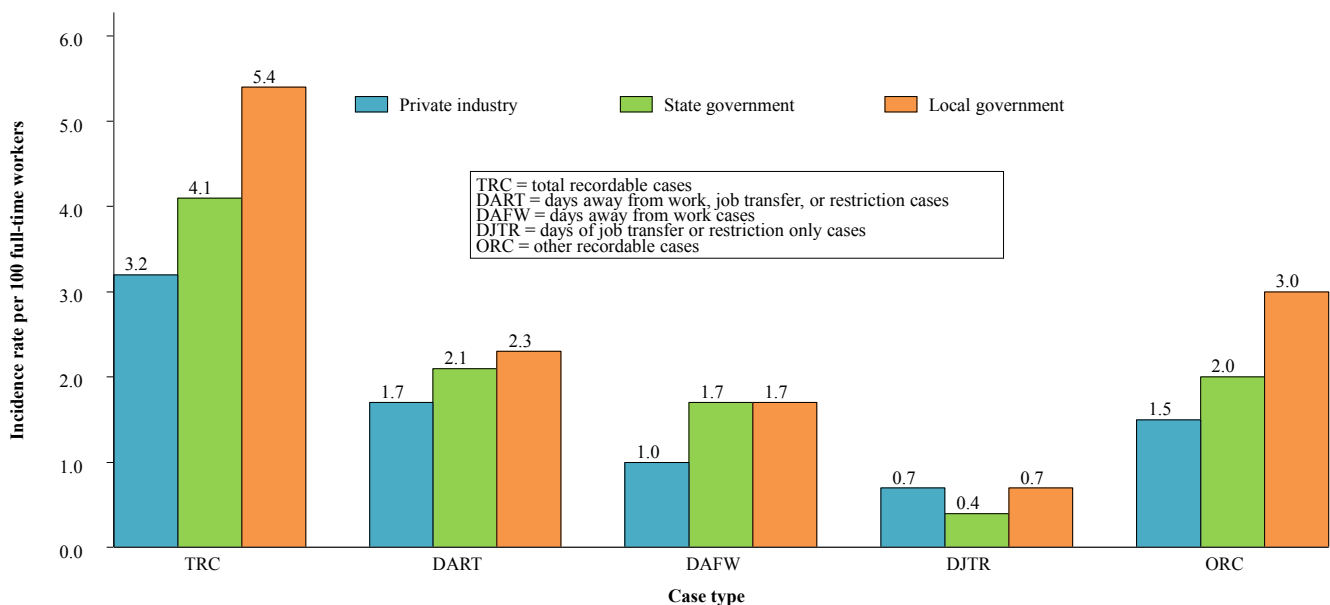
falling 0.5 cases to 2.3 cases per 10,000 full-time workers. Rates among the other individual illness categories were relatively unchanged compared to a year earlier.

Goods-producing industries accounted for 35.6 percent of all occupational illness cases in 2014, resulting in an incidence rate of 26.0 cases per 10,000 full-time workers—down 1.6 cases. Service-providing industries accounted for 64.4 percent of private industry illness cases and experienced a rate of 12.5 cases per 10,000 full-time workers in 2014—down 1.2 cases.

### National Public Sector Estimates

An estimated 722,300 injury and illness cases were reported in 2014 among the approximately 18.3 million state and local government workers—for example, police protection and fire protection—resulting in a rate of 5.0 cases per 100 full-time workers. The rate among these workers was relatively unchanged from a year earlier (5.2 cases) but was higher than the rate among private industry workers (3.2 cases) in 2014. Nearly 4 in 5 injuries and illnesses reported in the public sector occurred among local government workers in 2014, resulting in an injury and illness rate of 5.4 cases per 100 full-time workers—higher than the 4.1 cases per 100 full-time workers in state government.

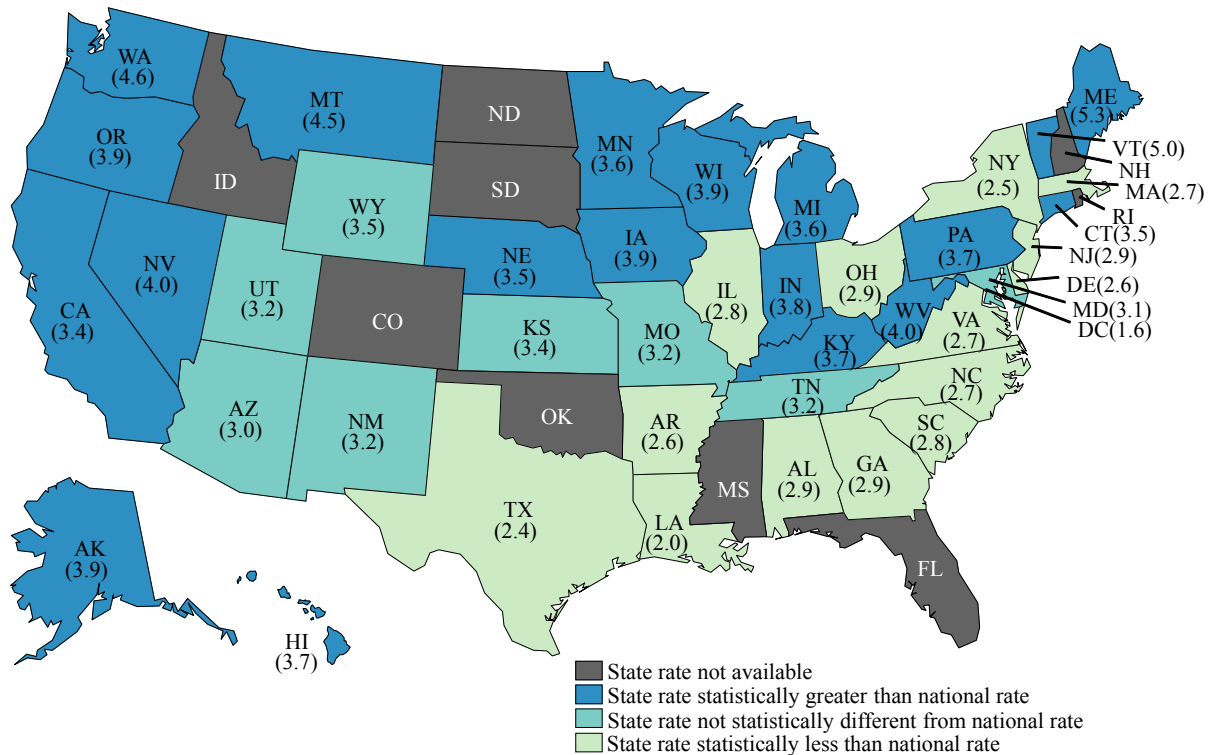
**Chart 3. Nonfatal occupational injury and illness incidence rates by case type and ownership, 2014**



### State Estimates

Among states for which estimates are available for 2014, the private industry TRC injury and illness incidence rates declined in 10 states and were relatively unchanged in 31 states and in the District of Columbia, compared to a year earlier. The private industry TRC injury and illness incidence rates were higher in 19 states than the national rate of 3.2 cases per 100 full-time workers, lower than the national rate in 14 states and in the District of Columbia, and about the same as the national rate in eight states. Factors such as differences in the composition of industry employment may influence state incidence rates and should be considered whenever comparing rates among different states.

**Chart 4. State nonfatal occupational injury and illness incidence rates, private industry, 2014**



Note: Total recordable case (TRC) incidence rate per 100 full-time workers; National rate is 3.2 cases per 100 equivalent full-time workers.

Private industry and public sector estimates are available for 41 participating states, three U.S. territories, and for the District of Columbia for 2014. Data for establishments in the nine states for which individual estimates are unavailable are collected by Bureau of Labor Statistics (BLS) regional offices and used solely for the tabulation of national estimates. State estimates will be available online on Friday, November 13, 2015; these estimates may also be requested prior to this date from the respective state offices. (See [www.bls.gov/iif/oshstate.htm](http://www.bls.gov/iif/oshstate.htm) for state contacts.)

### Publication Tables and Supplemental Charts

BLS has generated estimates of injuries and illnesses for many of the 2-, 3-, 4-, 5-, and 6-digit industries as defined in the 2012 *North American Industry Classification System (NAICS)* manual. A complete listing of these estimates is not available in this release. However, summary tables 1 and 2—providing incidence rates and counts of injuries and illnesses by detailed NAICS industry, case type, and ownership (e.g., total recordable cases or cases with days away from work in private industry), respectively—may be accessed from [www.bls.gov/iif/oshsum.htm](http://www.bls.gov/iif/oshsum.htm), requested from BLS staff at (202) 691-6170, or requested by email at [IIFSTAFF@bls.gov](mailto:IIFSTAFF@bls.gov). Supplemental tables and charts illustrating trends among incidence rates and counts are also available from these sources. Information in this release will be made available to sensory impaired individuals upon request. Voice phone: (202) 691-5200; Federal Relay Service (800) 877-8339.

### Background of the Survey

This news release is the second in a series of three releases from BLS covering occupational safety and health statistics for the 2014 calendar year and follows the September preliminary report on fatal work-

related injuries from the Census of Fatal Occupational Injuries (CFOI). A third release in November will provide case circumstances and worker characteristics from the SOII for nonfatal injury and illness cases requiring at least one day away from work to recuperate.

All statements of comparison made in this news release were found to be statistically significant at the 95 percent confidence level. Additional background and methodological information regarding the BLS occupational safety and health statistics program can be found in Chapter 9 of the BLS Handbook of Methods at [www.bls.gov/opub/hom/pdf/homch9.pdf](http://www.bls.gov/opub/hom/pdf/homch9.pdf). Employment data in this news release are 2014 annual averages from the BLS Quarterly Census of Employment and Wages (QCEW) program.

### **Completeness of SOII Estimates**

BLS has long acknowledged that some conditions which often are difficult for employers to relate to the workplace are not adequately recognized and reported during a calendar year (for example, long-term latent illnesses) and are believed to be understated in SOII illness measures. Following several studies in the mid-2000s questioning the completeness of SOII injury and illness counts, BLS began internal research in 2007 and, at the request of Congress, established an ongoing research program. Initial research conducted between 2009 and 2012 found that the SOII failed to capture some cases but could not determine the magnitude or leading cause of an undercount. Researchers determined that the ability to match injury and illness data across different data sources was impacted by various factors, such as establishment type, the time of case filing, and the type of injury. BLS initiated additional research from 2012 to 2014 that included interviews with employers in four states to learn more about their injury and illness recordkeeping practices and a multiple-year match of SOII data to workers' compensation records to analyze matching trends over time. BLS is currently funding a nationwide follow-back survey with SOII respondents to learn more about their recordkeeping practices and timing issues that may negatively affect injury and illness reporting to the SOII. BLS also continues to conduct exploratory research on the collection of occupational injury and illness data directly from employees. For more information on undercount research, please see [www.bls.gov/iif/undercount.htm](http://www.bls.gov/iif/undercount.htm).

TABLE 1. Incidence rates<sup>1</sup> of nonfatal occupational injuries and illnesses by case type and ownership, selected industries, 2014

Industry <sup>2</sup>	NAICS code <sup>3</sup>	Total recordable cases	Cases with days away from work, job transfer, or restriction			Other recordable cases
			Total	Cases with days away from work <sup>4</sup>	Cases with job transfer or restriction	
<b>All industries including state and local government<sup>5</sup></b> .....		3.4	1.8	1.1	0.7	1.6
<b>Private industry<sup>5</sup></b> .....		3.2	1.7	1.0	.7	1.5
<b>Goods-producing<sup>5</sup></b> .....		3.8	2.2	1.1	1.0	1.7
<b>Natural resources and mining<sup>5,6</sup></b> .....		3.8	2.3	1.3	1.0	1.5
Agriculture, forestry, fishing and hunting <sup>5</sup> .....	11	5.5	3.3	1.8	1.5	2.2
Crop production <sup>5</sup> .....	111	5.5	3.3	1.6	1.7	2.3
Animal production <sup>5</sup> .....	112	7.1	4.4	2.5	1.9	2.7
Forestry and logging .....	113	5.1	2.1	1.9	.2	2.9
Fishing, hunting and trapping .....	114	4.9	4.1	—	.3	.8
Support activities for agriculture and forestry .....	115	4.5	2.7	1.4	1.3	1.8
Mining, quarrying, and oil and gas extraction <sup>6</sup> .....	21	2.0	1.3	.8	.4	.7
Oil and gas extraction .....	211	—	.8	.6	.2	.5
Mining (except oil and gas) <sup>7</sup> .....	212	2.8	1.9	1.4	.5	.9
Support activities for mining .....	213	1.8	1.1	.7	.5	.7
<b>Construction</b> .....		3.6	2.0	1.3	.6	1.6
Construction .....	23	3.6	2.0	1.3	.6	1.6
Construction of buildings .....	236	3.3	1.9	1.3	.6	1.4
Heavy and civil engineering construction .....	237	3.0	1.7	1.1	.7	1.3
Specialty trade contractors .....	238	3.8	2.0	1.4	.6	1.8
<b>Manufacturing</b> .....		4.0	2.2	1.0	1.2	1.7
Manufacturing .....	31-33	4.0	2.2	1.0	1.2	1.7
Food manufacturing .....	311	5.1	3.3	1.3	2.0	1.8
Beverage and tobacco product manufacturing .....	312	6.0	4.0	1.6	2.3	2.0
Textile mills .....	313	3.2	1.7	.7	1.0	1.5
Textile product mills .....	314	3.5	2.1	1.0	1.1	1.4
Apparel manufacturing .....	315	1.5	.8	.4	.5	.7
Leather and allied product manufacturing .....	316	3.9	2.2	1.0	1.1	1.7
Wood product manufacturing .....	321	6.8	3.8	1.9	1.8	3.0
Paper manufacturing .....	322	2.9	1.7	.9	.9	1.1
Printing and related support activities .....	323	2.5	1.5	.8	.7	1.0
Petroleum and coal products manufacturing .....	324	1.7	.8	.5	.3	.9

See footnotes at end of table.

TABLE 1. Incidence rates<sup>1</sup> of nonfatal occupational injuries and illnesses by case type and ownership, selected industries, 2014 — Continued

Industry <sup>2</sup>	NAICS code <sup>3</sup>	Total recordable cases	Cases with days away from work, job transfer, or restriction			Other recordable cases
			Total	Cases with days away from work <sup>4</sup>	Cases with job transfer or restriction	
Chemical manufacturing .....	325	2.3	1.4	0.7	0.7	0.9
Plastics and rubber products manufacturing .....	326	4.6	2.7	1.3	1.5	1.9
Nonmetallic mineral product manufacturing .....	327	5.1	3.2	1.7	1.5	2.0
Primary metal manufacturing .....	331	5.2	2.9	1.2	1.6	2.3
Fabricated metal product manufacturing .....	332	4.8	2.4	1.3	1.2	2.4
Machinery manufacturing .....	333	3.8	1.9	.9	1.0	1.9
Computer and electronic product manufacturing .....	334	1.3	.7	.4	.3	.6
Electrical equipment, appliance, and component manufacturing .....	335	3.0	1.8	.8	1.0	1.3
Transportation equipment manufacturing .....	336	4.7	2.6	1.0	1.6	2.1
Furniture and related product manufacturing .....	337	4.8	2.6	1.2	1.4	2.2
Miscellaneous manufacturing .....	339	2.5	1.4	.7	.7	1.1
<b>Service-providing</b> .....		3.0	1.6	.9	.6	1.4
<b>Trade, transportation, and utilities<sup>8</sup></b> .....		3.6	2.2	1.3	1.0	1.4
Wholesale trade .....	42	2.9	1.9	1.1	.9	1.0
Merchant wholesalers, durable goods .....	423	2.6	1.6	.9	.7	1.0
Merchant wholesalers, nondurable goods .....	424	3.9	2.8	1.5	1.3	1.1
Wholesale electronic markets and agents and brokers .....	425	1.6	1.1	.7	—	.5
Retail trade .....	44-45	3.6	2.0	1.0	1.0	1.6
Motor vehicle and parts dealers .....	441	3.4	1.7	1.0	.7	1.7
Furniture and home furnishings stores .....	442	3.9	2.3	1.5	.8	1.6
Electronics and appliance stores .....	443	1.4	.8	.6	.2	.6
Building material and garden equipment and supplies dealers ...	444	5.0	3.4	1.6	1.8	1.6
Food and beverage stores .....	445	4.4	2.6	1.4	1.2	1.7
Health and personal care stores .....	446	2.1	.9	.6	.3	1.3
Gasoline stations .....	447	2.3	1.1	.6	.5	1.2
Clothing and clothing accessories stores .....	448	2.0	.7	.4	.3	1.4
Sporting goods, hobby, book, and music stores .....	451	2.6	1.1	.6	.5	1.4
General merchandise stores .....	452	4.8	2.8	1.2	1.6	2.0
Miscellaneous store retailers .....	453	3.4	1.7	1.0	.7	1.7
Nonstore retailers .....	454	1.8	1.2	.6	.5	.7
Transportation and warehousing <sup>8</sup> .....	48-49	4.8	3.4	2.3	1.2	1.4
Air transportation .....	481	7.5	6.1	4.5	1.6	1.3
Rail transportation <sup>8</sup> .....	482	2.0	1.5	1.3	.1	.5
Water transportation .....	483	2.3	1.4	.9	.6	.9
Truck transportation .....	484	4.5	3.2	2.3	.9	1.3
Transit and ground passenger transportation .....	485	4.6	3.2	2.4	.8	1.4

See footnotes at end of table.

TABLE 1. Incidence rates<sup>1</sup> of nonfatal occupational injuries and illnesses by case type and ownership, selected industries, 2014 — Continued

Industry <sup>2</sup>	NAICS code <sup>3</sup>	Total recordable cases	Cases with days away from work, job transfer, or restriction			Other recordable cases
			Total	Cases with days away from work <sup>4</sup>	Cases with job transfer or restriction	
Pipeline transportation .....	486	1.8	0.8	0.6	0.2	0.9
Scenic and sightseeing transportation .....	487	3.2	2.4	1.9	.6	.8
Support activities for transportation .....	488	3.6	2.2	1.5	.8	1.4
Couriers and messengers .....	492	7.1	5.2	3.1	2.2	1.8
Warehousing and storage .....	493	5.2	3.7	1.7	1.9	1.5
Utilities .....	22	2.4	1.3	.7	.6	1.2
Utilities .....	221	2.4	1.3	.7	.6	1.2
<b>Information</b> .....		1.4	.8	.6	.2	.6
Information .....	51	1.4	.8	.6	.2	.6
Publishing industries (except Internet) .....	511	1.0	.4	.3	.1	.6
Motion picture and sound recording industries .....	512	1.6	.6	.4	.2	1.0
Broadcasting (except Internet) .....	515	1.4	.6	.4	.2	.7
Telecommunications .....	517	2.2	1.6	1.3	.3	.6
Data processing, hosting, and related services .....	518	.5	.2	.2	.1	.3
Other information services .....	519	.4	.2	—	( <sup>9</sup> )	.2
<b>Financial activities</b> .....		1.2	.5	.4	.2	.7
Finance and insurance .....	52	.7	.2	.2	( <sup>9</sup> )	.4
Monetary authorities - central bank .....	521	1.0	.5	.3	.2	.5
Credit intermediation and related activities .....	522	.8	.3	.2	.1	.5
Securities, commodity contracts, and other financial investments and related activities .....	523	.2	.1	.1	( <sup>9</sup> )	.1
Insurance carriers and related activities .....	524	.6	.2	.2	( <sup>9</sup> )	.4
Real estate and rental and leasing .....	53	2.9	1.5	.9	.6	1.4
Real estate .....	531	2.5	1.3	.9	.4	1.2
Rental and leasing services .....	532	4.0	1.9	.9	1.0	2.1
Lessors of nonfinancial intangible assets (except copyrighted works) .....	533	1.0	.2	.1	—	.8
<b>Professional and business services</b> .....		1.5	.8	.5	.3	.7
Professional, scientific, and technical services .....	54	.9	.4	.3	.1	.6
Professional, scientific, and technical services .....	541	.9	.4	.3	.1	.6
Management of companies and enterprises .....	55	1.0	.5	.3	.2	.5

See footnotes at end of table.



TABLE 1. Incidence rates<sup>1</sup> of nonfatal occupational injuries and illnesses by case type and ownership, selected industries, 2014 — Continued

Industry <sup>2</sup>	NAICS code <sup>3</sup>	Total recordable cases	Cases with days away from work, job transfer, or restriction			Other recordable cases
			Total	Cases with days away from work <sup>4</sup>	Cases with job transfer or restriction	
Administrative and support and waste management and remediation services .....	56	2.6	1.6	1.1	0.5	1.1
Administrative and support services .....	561	2.4	1.4	1.0	.4	1.0
Waste management and remediation services .....	562	5.1	3.4	2.2	1.2	1.7
<b>Education and health services</b> .....		4.2	2.0	1.1	.8	2.2
Educational services .....	61	2.1	.9	.6	.2	1.2
Educational services .....	611	2.1	.9	.6	.2	1.2
Health care and social assistance .....	62	4.5	2.1	1.2	.9	2.4
Ambulatory health care services .....	621	2.4	.9	.6	.3	1.5
Hospitals .....	622	6.2	2.5	1.5	1.0	3.7
Nursing and residential care facilities .....	623	7.1	4.3	2.0	2.3	2.8
Social assistance .....	624	3.5	1.8	1.3	.6	1.6
<b>Leisure and hospitality</b> .....		3.6	1.5	1.0	.6	2.1
Arts, entertainment, and recreation .....	71	4.2	2.1	1.2	.9	2.1
Performing arts, spectator sports, and related industries .....	711	4.7	2.2	1.5	.7	2.5
Museums, historical sites, and similar institutions .....	712	4.0	2.0	1.2	.8	2.0
Amusement, gambling, and recreation industries .....	713	4.1	2.1	1.1	.9	2.0
Accommodation and food services .....	72	3.5	1.4	.9	.5	2.1
Accommodation .....	721	4.9	2.7	1.4	1.2	2.3
Food services and drinking places .....	722	3.2	1.2	.8	.3	2.0
<b>Other services</b> .....		2.5	1.2	.9	.4	1.2
Other services, except public administration .....	81	2.5	1.2	.9	.4	1.2
Repair and maintenance .....	811	3.0	1.4	1.0	.4	1.6
Personal and laundry services .....	812	2.2	1.4	.9	.5	.8
Religious, grantmaking, civic, professional, and similar organizations .....	813	2.0	.9	.6	.2	1.1
<b>State and local government<sup>5</sup></b> .....		5.0	2.3	1.7	.6	2.7
<b>State government<sup>5</sup></b> .....		4.1	2.1	1.7	.4	2.0
<b>Service-providing</b> .....		4.1	2.1	1.7	.4	2.0

See footnotes at end of table.

TABLE 1. Incidence rates<sup>1</sup> of nonfatal occupational injuries and illnesses by case type and ownership, selected industries, 2014 — Continued

Industry <sup>2</sup>	NAICS code <sup>3</sup>	Total recordable cases	Cases with days away from work, job transfer, or restriction			Other recordable cases
			Total	Cases with days away from work <sup>4</sup>	Cases with job transfer or restriction	
<b>Education and health services</b> .....		3.7	1.9	1.4	0.5	1.9
Educational services .....	61	2.1	.9	.6	.3	1.3
Educational services .....	611	2.1	.9	.6	.3	1.3
Health care and social assistance .....	62	8.1	4.6	3.6	1.0	3.5
Hospitals .....	622	8.7	4.7	3.6	1.1	4.0
Nursing and residential care facilities .....	623	12.6	7.9	6.2	1.7	4.6
<b>Public administration</b> .....		4.4	2.3	1.9	.4	2.1
Public administration .....	92	4.4	2.3	1.9	.4	2.1
Justice, public order, and safety activities .....	922	6.1	3.3	2.7	.5	2.8
<b>Local government<sup>5</sup></b> .....		5.4	2.3	1.7	.7	3.0
<b>Goods-producing<sup>5</sup></b> .....		8.6	4.2	3.0	1.3	4.3
<b>Construction</b> .....		8.6	4.2	3.0	1.3	4.4
Construction .....	23	8.6	4.2	3.0	1.3	4.4
Heavy and civil engineering construction .....	237	8.6	4.2	2.9	1.3	4.3
<b>Service-providing</b> .....		5.3	2.3	1.7	.7	3.0
<b>Trade, transportation, and utilities<sup>8</sup></b> .....		6.5	3.6	2.7	.8	2.9
Transportation and warehousing <sup>8</sup> .....	48-49	7.5	4.5	4.0	.5	3.0
Transit and ground passenger transportation .....	485	7.1	4.4	4.0	.4	2.7
Utilities .....	22	5.4	2.7	1.5	1.2	—
Utilities .....	221	5.4	2.7	1.5	1.2	—

See footnotes at end of table.

TABLE 1. Incidence rates<sup>1</sup> of nonfatal occupational injuries and illnesses by case type and ownership, selected industries, 2014 — Continued

Industry <sup>2</sup>	NAICS code <sup>3</sup>	Total recordable cases	Cases with days away from work, job transfer, or restriction			Other recordable cases
			Total	Cases with days away from work <sup>4</sup>	Cases with job transfer or restriction	
<b>Education and health services</b> .....		4.3	1.6	1.1	0.5	2.7
Educational services .....	61	4.1	1.5	1.0	.5	2.6
Educational services .....	611	4.1	1.5	1.0	.5	2.6
Health care and social assistance .....	62	5.6	2.4	1.6	.8	3.2
Hospitals .....	622	5.7	2.2	1.4	.8	3.6
Nursing and residential care facilities .....	623	7.4	5.2	3.5	1.6	2.3
<b>Public administration</b> .....		7.1	3.4	2.5	.9	3.7
Public administration .....	92	7.1	3.4	2.5	.9	3.7
Justice, public order, and safety activities .....	922	9.5	4.8	3.9	.9	4.7

<sup>1</sup> The incidence rates represent the number of injuries and illnesses per 100 full-time workers and were calculated as: (N/EH) x 200,000, where

N = number of injuries and illnesses  
 EH = total hours worked by all employees during the calendar year  
 200,000 = base for 100 equivalent full-time workers (working 40 hours per week, 50 weeks per year)

<sup>2</sup> Totals include data for industries not shown separately.

<sup>3</sup> *North American Industry Classification System* — United States, 2012

<sup>4</sup> Days-away-from-work cases include those that result in days away from work with or without job transfer or restriction.

<sup>5</sup> Excludes farms with fewer than 11 employees.

<sup>6</sup> Data for Mining (Sector 21 in the *North American Industry Classification System* — United States, 2012) include establishments not governed by the Mine Safety and Health Administration rules and reporting, such as those in Oil and Gas Extraction and related support activities. Data for mining operators in coal, metal, and nonmetal mining are provided to BLS

by the Mine Safety and Health Administration, U.S. Department of Labor. Independent mining contractors are excluded from the coal, metal, and nonmetal mining industries. These data do not reflect the changes the Occupational Safety and Health Administration made to its recordkeeping requirements effective January 1, 2002; therefore, estimates for these industries are not comparable to estimates in other industries.

<sup>7</sup> Data for mining operators in this industry are provided to BLS by the Mine Safety and Health Administration, U.S. Department of Labor. Independent mining contractors are excluded. These data do not reflect the changes the Occupational Safety and Health Administration made to its recordkeeping requirements effective January 1, 2002; therefore, estimates for these industries are not comparable to estimates in other industries.

<sup>8</sup> Data for employers in railroad transportation are provided to BLS by the Federal Railroad Administration, U.S. Department of Transportation.

<sup>9</sup> Data too small to be displayed.

NOTE: Because of rounding, components may not add to totals. Dash indicates data do not meet publication guidelines.

SOURCE: U.S. Bureau of Labor Statistics, U.S. Department of Labor

**TABLE 2. Numbers of nonfatal occupational injuries and illnesses by case type and ownership, selected industries, 2014**

(thousands)

Industry <sup>1</sup>	NAICS code <sup>2</sup>	Total recordable cases	Cases with days away from work, job transfer, or restriction			Other recordable cases
			Total	Cases with days away from work <sup>3</sup>	Cases with job transfer or restriction	
<b>All industries including state and local government<sup>4</sup></b> .....		3,675.8	1,909.6	1,157.4	752.1	1,766.2
<b>Private industry<sup>4</sup></b> .....		2,953.5	1,580.0	916.4	663.6	1,373.5
<b>Goods-producing<sup>4</sup></b> .....		754.5	427.2	225.2	202.0	327.3
<b>Natural resources and mining<sup>4,5</sup></b> .....		70.3	42.6	24.7	17.9	27.6
Agriculture, forestry, fishing and hunting <sup>4</sup> .....	11	52.4	31.2	17.0	14.2	21.2
Crop production <sup>4</sup> .....	111	21.1	12.5	6.2	6.3	8.6
Animal production <sup>4</sup> .....	112	14.3	8.9	5.1	3.8	5.5
Forestry and logging .....	113	2.8	1.2	1.1	.1	1.6
Fishing, hunting and trapping .....	114	.3	.2	–	( <sup>6</sup> )	( <sup>6</sup> )
Support activities for agriculture and forestry .....	115	13.9	8.4	4.4	4.0	5.5
Mining, quarrying, and oil and gas extraction <sup>5</sup> .....	21	17.9	11.4	7.7	3.7	6.4
Oil and gas extraction .....	211	–	1.6	1.2	.3	1.0
Mining (except oil and gas) <sup>7</sup> .....	212	6.5	4.4	3.3	1.1	2.2
Support activities for mining .....	213	8.8	5.5	3.2	2.3	3.3
<b>Construction</b> .....		200.9	110.0	74.5	35.6	90.9
Construction .....	23	200.9	110.0	74.5	35.6	90.9
Construction of buildings .....	236	41.2	23.6	16.2	7.4	17.5
Heavy and civil engineering construction .....	237	26.9	15.6	9.8	5.8	11.3
Specialty trade contractors .....	238	132.9	70.8	48.5	22.3	62.1
<b>Manufacturing</b> .....		483.3	274.5	126.0	148.5	208.8
Manufacturing .....	31-33	483.3	274.5	126.0	148.5	208.8
Food manufacturing .....	311	76.6	49.5	19.9	29.5	27.2
Beverage and tobacco product manufacturing .....	312	11.7	7.7	3.2	4.5	3.9
Textile mills .....	313	3.8	2.0	.8	1.1	1.8
Textile product mills .....	314	3.7	2.3	1.0	1.2	1.5
Apparel manufacturing .....	315	2.1	1.1	.5	.6	.9
Leather and allied product manufacturing .....	316	1.0	.6	.3	.3	.5
Wood product manufacturing .....	321	25.2	13.9	7.2	6.7	11.2
Paper manufacturing .....	322	11.1	6.7	3.4	3.4	4.4

See footnotes at end of table.

TABLE 2. Numbers of nonfatal occupational injuries and illnesses by case type and ownership, selected industries, 2014 — Continued

(thousands)

Industry <sup>1</sup>	NAICS code <sup>2</sup>	Total recordable cases	Cases with days away from work, job transfer, or restriction			Other recordable cases
			Total	Cases with days away from work <sup>3</sup>	Cases with job transfer or restriction	
Printing and related support activities .....	323	10.9	6.4	3.5	2.9	4.5
Petroleum and coal products manufacturing .....	324	2.0	1.0	.6	.4	1.1
Chemical manufacturing .....	325	19.0	11.5	5.6	5.8	7.5
Plastics and rubber products manufacturing .....	326	31.1	18.5	8.5	10.0	12.6
Nonmetallic mineral product manufacturing .....	327	19.8	12.2	6.5	5.8	7.6
Primary metal manufacturing .....	331	21.6	12.0	5.2	6.8	9.6
Fabricated metal product manufacturing .....	332	70.5	35.5	18.4	17.0	35.1
Machinery manufacturing .....	333	43.0	21.1	9.9	11.2	21.8
Computer and electronic product manufacturing .....	334	13.5	7.1	3.9	3.2	6.4
Electrical equipment, appliance, and component manufacturing .....	335	11.6	6.8	3.0	3.8	4.8
Transportation equipment manufacturing .....	336	73.9	41.5	16.4	25.1	32.4
Furniture and related product manufacturing .....	337	16.8	9.2	4.2	5.0	7.6
Miscellaneous manufacturing .....	339	14.4	7.9	3.9	4.0	6.4
<b>Service-providing</b> .....		2,199.0	1,152.8	691.3	461.6	1,046.2
<b>Trade, transportation, and utilities<sup>8</sup></b> .....		794.1	492.8	278.7	214.1	301.4
Wholesale trade .....	42	163.1	107.9	59.2	48.6	55.3
Merchant wholesalers, durable goods .....	423	74.9	45.4	24.6	20.8	29.5
Merchant wholesalers, nondurable goods .....	424	75.3	53.5	29.0	24.5	21.8
Wholesale electronic markets and agents and brokers .....	425	13.0	9.0	5.7	—	4.0
Retail trade .....	44-45	416.1	233.6	120.6	112.9	182.5
Motor vehicle and parts dealers .....	441	59.7	29.7	18.2	11.5	30.0
Furniture and home furnishings stores .....	442	13.6	8.0	5.3	2.7	5.6
Electronics and appliance stores .....	443	5.6	3.1	2.3	.9	2.5
Building material and garden equipment and supplies dealers .....	444	50.9	34.7	16.6	18.0	16.2
Food and beverage stores .....	445	93.9	56.6	29.8	26.9	37.2
Health and personal care stores .....	446	16.1	6.6	4.2	2.4	9.5
Gasoline stations .....	447	15.6	7.6	4.2	3.4	7.9
Clothing and clothing accessories stores .....	448	16.3	5.4	3.3	2.1	10.9
Sporting goods, hobby, book, and music stores .....	451	9.5	4.2	2.3	1.9	5.3
General merchandise stores .....	452	107.8	62.9	26.3	36.6	44.9
Miscellaneous store retailers .....	453	19.2	9.6	5.4	4.2	9.6
Nonstore retailers .....	454	7.9	5.1	2.8	2.4	2.8
Transportation and warehousing <sup>8</sup> .....	48-49	201.5	144.4	95.0	49.3	57.2
Air transportation .....	481	26.8	22.0	16.1	5.9	4.8

See footnotes at end of table.

TABLE 2. Numbers of nonfatal occupational injuries and illnesses by case type and ownership, selected industries, 2014 — Continued

(thousands)

Industry <sup>1</sup>	NAICS code <sup>2</sup>	Total recordable cases	Cases with days away from work, job transfer, or restriction			Other recordable cases
			Total	Cases with days away from work <sup>3</sup>	Cases with job transfer or restriction	
Rail transportation <sup>8</sup> .....	482	4.8	3.5	3.2	0.3	1.3
Water transportation .....	483	1.6	1.0	.6	.4	.6
Truck transportation .....	484	66.0	46.6	33.4	13.2	19.4
Transit and ground passenger transportation .....	485	15.2	10.6	7.8	2.8	4.6
Pipeline transportation .....	486	.8	.4	.3	.1	.4
Scenic and sightseeing transportation .....	487	.6	.5	.4	.1	.2
Support activities for transportation .....	488	20.9	13.0	8.5	4.4	7.9
Couriers and messengers .....	492	29.5	21.9	12.7	9.2	7.6
Warehousing and storage .....	493	35.3	24.9	11.9	13.0	10.4
Utilities .....	22	13.4	6.9	3.8	3.2	6.5
Utilities .....	221	13.4	6.9	3.8	3.2	6.5
<b>Information</b> .....		35.3	20.8	15.7	5.0	14.5
Information .....	51	35.3	20.8	15.7	5.0	14.5
Publishing industries (except Internet) .....	511	6.8	3.0	2.0	.9	3.9
Motion picture and sound recording industries .....	512	4.5	1.7	1.2	.6	2.7
Broadcasting (except Internet) .....	515	3.5	1.6	1.1	.5	1.9
Telecommunications .....	517	18.3	13.4	10.6	2.8	4.9
Data processing, hosting, and related services .....	518	1.4	.6	.4	.2	.8
Other information services .....	519	.8	.5	—	( <sup>6</sup> )	.3
<b>Financial activities</b> .....		85.9	38.9	26.4	12.5	47.0
Finance and insurance .....	52	34.8	12.6	10.0	2.6	22.2
Monetary authorities - central bank .....	521	.2	.1	( <sup>6</sup> )	( <sup>6</sup> )	.1
Credit intermediation and related activities .....	522	19.8	7.2	5.6	1.6	12.5
Securities, commodity contracts, and other financial investments and related activities .....	523	1.8	.8	.7	.1	1.0
Insurance carriers and related activities .....	524	13.0	4.4	3.6	.8	8.5
Real estate and rental and leasing .....	53	51.1	26.3	16.3	10.0	24.8
Real estate .....	531	32.0	17.1	11.8	5.3	14.9
Rental and leasing services .....	532	19.0	9.2	4.5	4.7	9.8
Lessors of nonfinancial intangible assets (except copyrighted works) .....	533	.2	( <sup>6</sup> )	( <sup>6</sup> )	—	.2
<b>Professional and business services</b> .....		220.3	115.3	77.7	37.6	105.0

See footnotes at end of table.

TABLE 2. Numbers of nonfatal occupational injuries and illnesses by case type and ownership, selected industries, 2014 — Continued

(thousands)

Industry <sup>1</sup>	NAICS code <sup>2</sup>	Total recordable cases	Cases with days away from work, job transfer, or restriction			Other recordable cases
			Total	Cases with days away from work <sup>3</sup>	Cases with job transfer or restriction	
Professional, scientific, and technical services .....	54	69.9	27.7	19.4	8.3	42.2
Professional, scientific, and technical services .....	541	69.9	27.7	19.4	8.3	42.2
Management of companies and enterprises .....	55	21.1	10.1	5.5	4.5	11.0
Administrative and support and waste management and remediation services .....	56	129.3	77.6	52.8	24.7	51.7
Administrative and support services .....	561	109.3	64.4	44.2	20.2	45.0
Waste management and remediation services .....	562	19.9	13.2	8.6	4.5	6.8
<b>Education and health services .....</b>		<b>651.0</b>	<b>304.6</b>	<b>175.9</b>	<b>128.7</b>	<b>346.4</b>
Educational services .....	61	38.5	15.9	11.5	4.5	22.6
Educational services .....	611	38.5	15.9	11.5	4.5	22.6
Health care and social assistance .....	62	612.5	288.7	164.4	124.2	323.8
Ambulatory health care services .....	621	124.3	46.1	30.6	15.6	78.2
Hospitals .....	622	238.2	95.9	56.6	39.4	142.2
Nursing and residential care facilities .....	623	177.0	108.0	50.8	57.1	69.0
Social assistance .....	624	72.9	38.6	26.5	12.2	34.3
<b>Leisure and hospitality .....</b>		<b>337.5</b>	<b>142.9</b>	<b>90.9</b>	<b>52.0</b>	<b>194.6</b>
Arts, entertainment, and recreation .....	71	54.7	27.3	15.8	11.5	27.4
Performing arts, spectator sports, and related industries .....	711	12.8	6.0	4.1	1.9	6.8
Museums, historical sites, and similar institutions .....	712	4.1	2.0	1.2	.8	2.0
Amusement, gambling, and recreation industries .....	713	37.8	19.3	10.5	8.7	18.5
Accommodation and food services .....	72	282.8	115.6	75.1	40.4	167.3
Accommodation .....	721	72.2	39.1	21.3	17.8	33.1
Food services and drinking places .....	722	210.7	76.5	53.9	22.6	134.2
<b>Other services .....</b>		<b>74.8</b>	<b>37.6</b>	<b>25.9</b>	<b>11.6</b>	<b>37.2</b>
Other services, except public administration .....	81	74.8	37.6	25.9	11.6	37.2
Repair and maintenance .....	811	34.5	15.8	11.4	4.4	18.6
Personal and laundry services .....	812	22.0	13.9	8.7	5.2	8.2

See footnotes at end of table.

TABLE 2. Numbers of nonfatal occupational injuries and illnesses by case type and ownership, selected industries, 2014 — Continued

(thousands)

Industry <sup>1</sup>	NAICS code <sup>2</sup>	Total recordable cases	Cases with days away from work, job transfer, or restriction			Other recordable cases
			Total	Cases with days away from work <sup>3</sup>	Cases with job transfer or restriction	
Religious, grantmaking, civic, professional, and similar organizations .....	813	18.3	7.9	5.8	2.1	10.4
<b>State and local government<sup>4</sup></b> .....		722.3	329.5	241.0	88.6	392.8
<b>State government<sup>4</sup></b> .....		162.3	84.5	67.4	17.1	77.8
<b>Service-providing</b> .....		158.4	82.3	65.5	16.8	76.0
<b>Education and health services</b> .....		74.9	37.6	27.8	9.8	37.3
Educational services .....	61	31.1	12.5	8.4	4.2	18.5
Educational services .....	611	31.1	12.5	8.4	4.2	18.5
Health care and social assistance .....	62	43.8	25.0	19.4	5.6	18.8
Hospitals .....	622	25.5	13.8	10.6	3.2	11.7
Nursing and residential care facilities .....	623	15.0	9.5	7.4	2.1	5.6
<b>Public administration</b> .....		76.3	39.8	33.2	6.5	36.6
Public administration .....	92	76.3	39.8	33.2	6.5	36.6
Justice, public order, and safety activities .....	922	43.2	23.1	19.3	3.8	20.1
<b>Local government<sup>4</sup></b> .....		560.0	245.0	173.6	71.5	314.9
<b>Goods-producing<sup>4</sup></b> .....		8.7	4.3	3.0	1.3	4.4
<b>Construction</b> .....		8.7	4.3	3.0	1.3	4.4
Construction .....	23	8.7	4.3	3.0	1.3	4.4
Heavy and civil engineering construction .....	237	8.5	4.2	2.9	1.3	4.3

See footnotes at end of table.



TABLE 2. Numbers of nonfatal occupational injuries and illnesses by case type and ownership, selected industries, 2014 — Continued

(thousands)

Industry <sup>1</sup>	NAICS code <sup>2</sup>	Total recordable cases	Cases with days away from work, job transfer, or restriction			Other recordable cases
			Total	Cases with days away from work <sup>3</sup>	Cases with job transfer or restriction	
<b>Service-providing</b> .....		551.3	240.8	170.6	70.2	310.5
<b>Trade, transportation, and utilities</b> <sup>8</sup> .....		30.2	16.7	12.8	3.9	13.5
Transportation and warehousing <sup>8</sup> .....	48-49	17.9	10.7	9.5	1.2	7.2
Transit and ground passenger transportation .....	485	13.7	8.5	7.7	.9	5.1
Utilities .....	22	12.2	6.0	3.3	2.7	—
Utilities .....	221	12.2	6.0	3.3	2.7	—
<b>Education and health services</b> .....		266.1	99.9	68.8	31.1	166.2
Educational services .....	61	225.1	82.4	57.5	25.0	142.6
Educational services .....	611	225.1	82.4	57.5	25.0	142.6
Health care and social assistance .....	62	41.0	17.5	11.4	6.1	23.5
Hospitals .....	622	30.3	11.4	7.3	4.1	18.9
Nursing and residential care facilities .....	623	4.2	2.9	2.0	.9	1.3
<b>Public administration</b> .....		233.3	112.2	81.3	30.9	121.1
Public administration .....	92	233.3	112.2	81.3	30.9	121.1
Justice, public order, and safety activities .....	922	84.2	42.5	34.9	7.7	41.6

<sup>1</sup> Totals include data for industries not shown separately.

<sup>2</sup> *North American Industry Classification System* — United States, 2012

<sup>3</sup> Days-away-from-work cases include those that result in days away from work with or without job transfer or restriction.

<sup>4</sup> Excludes farms with fewer than 11 employees.

<sup>5</sup> Data for Mining (Sector 21 in the *North American Industry Classification System* — United States, 2012) include establishments not governed by the Mine Safety and Health Administration rules and reporting, such as those in Oil and Gas Extraction and related support activities. Data for mining operators in coal, metal, and nonmetal mining are provided to BLS by the Mine Safety and Health Administration, U.S. Department of Labor. Independent mining contractors are excluded from the coal, metal, and nonmetal mining industries. These data do not reflect the changes the Occupational Safety and Health Administration made to its recordkeeping requirements effective January 1, 2002; therefore, estimates for these industries

are not comparable to estimates in other industries.

<sup>6</sup> Data too small to be displayed.

<sup>7</sup> Data for mining operators in this industry are provided to BLS by the Mine Safety and Health Administration, U.S. Department of Labor. Independent mining contractors are excluded. These data do not reflect the changes the Occupational Safety and Health Administration made to its recordkeeping requirements effective January 1, 2002; therefore, estimates for these industries are not comparable to estimates in other industries.

<sup>8</sup> Data for employers in railroad transportation are provided to BLS by the Federal Railroad Administration, U.S. Department of Transportation.

NOTE: Because of rounding, components may not add to totals. Dash indicates data do not meet publication guidelines.

SOURCE: U.S. Bureau of Labor Statistics, U.S. Department of Labor

TABLE 3. Incidence rates<sup>1</sup> of nonfatal occupational injuries and illnesses by major industry sector, employment size, and ownership, 2014

Industry sector	All establishments	Establishment employment size (workers)				
		1 to 10	11 to 49	50 to 249	250 to 999	1,000 or more
All industries including state and local government <sup>2</sup> .....	3.4	1.5	3.0	4.0	3.7	4.0
Private industry <sup>2</sup> .....	3.2	1.5	2.9	3.9	3.3	3.5
Goods-producing <sup>2</sup> .....	3.8	2.6	4.2	4.5	3.3	3.2
Natural resources and mining <sup>2,3</sup> .....	3.8	–	4.0	4.5	3.1	3.7
Construction .....	3.6	2.9	4.2	3.8	2.5	1.4
Manufacturing .....	4.0	2.0	4.2	4.8	3.5	3.3
Service-providing .....	3.0	1.3	2.6	3.7	3.3	3.6
Trade, transportation, and utilities <sup>4</sup> .....	3.6	1.6	3.2	4.3	4.7	4.4
Information .....	1.4	–	1.5	1.8	1.1	.9
Financial activities .....	1.2	1.3	1.3	1.4	1.0	.6
Professional and business services .....	1.5	.9	2.0	1.8	1.3	1.0
Education and health services .....	4.2	1.2	2.7	5.0	5.0	5.2
Leisure and hospitality .....	3.6	–	3.0	4.5	5.4	5.0
Other services, except public administration .....	2.5	1.6	2.6	3.7	2.9	2.5
State and local government <sup>2</sup> .....	5.0	3.2	4.8	5.0	5.6	4.9
State government <sup>2</sup> .....	4.1	–	–	3.4	4.8	3.8
Local government <sup>2</sup> .....	5.4	–	4.6	5.3	6.0	5.4

<sup>1</sup> The incidence rates represent the number of injuries and illnesses per 100 full-time workers and were calculated as: (N/EH) x 200,000, where

N = number of injuries and illnesses  
 EH = total hours worked by all employees during the calendar year  
 200,000 = base for 100 equivalent full-time workers (working 40 hours per week, 50 weeks per year)

<sup>2</sup> Excludes farms with fewer than 11 employees.

<sup>3</sup> Data for Mining (Sector 21 in the *North American Industry Classification System* — United States, 2012) include establishments not governed by the Mine Safety and Health Administration rules and reporting, such as those in Oil and Gas Extraction and related support

activities. Data for mining operators in coal, metal, and nonmetal mining are provided to BLS by the Mine Safety and Health Administration, U.S. Department of Labor. Independent mining contractors are excluded from the coal, metal, and nonmetal mining industries. These data do not reflect the changes the Occupational Safety and Health Administration made to its recordkeeping requirements effective January 1, 2002; therefore, estimates for these industries are not comparable to estimates in other industries.

<sup>4</sup> Data for employers in railroad transportation are provided to BLS by the Federal Railroad Administration, U.S. Department of Transportation.

NOTE: Dash indicates data do not meet publication guidelines.

SOURCE: U.S. Bureau of Labor Statistics, U.S. Department of Labor

**TABLE 4. Number of cases and incidence rate<sup>1</sup> of nonfatal occupational injuries and illnesses for industries with 100,000 or more cases, 2014**

Industry <sup>2</sup>	NAICS code <sup>3</sup>	Total cases (thousands)	Incidence rate
General medical and surgical hospitals (Private industry) .....	6221	222.3	6.2
Elementary and secondary schools (Local government) .....	6111	217.3	4.2
Restaurants and other eating places (Private industry) .....	72251	192.1	3.2
Nursing and residential care facilities (Private industry) .....	623	177.0	7.1
Specialty trade contractors (Private industry) .....	238	132.9	3.8
Ambulatory health care services (Private industry) .....	621	124.3	2.4
Administrative and support services (Private industry) .....	561	109.3	2.4
General merchandise stores (Private industry) .....	452	107.8	4.8
<b>All industries including state and local government<sup>4</sup> .....</b>		<b>3,675.8</b>	<b>3.4</b>

<sup>1</sup> The incidence rates represent the number of injuries and illnesses per 100 full-time workers and were calculated as: (N/EH) x 200,000, where

N = number of injuries and illnesses  
 EH = total hours worked by all employees during the calendar year  
 200,000 = base for 100 equivalent full-time workers (working 40 hours per week, 50 weeks per year)

<sup>2</sup> Totals include data for industries not shown separately.

<sup>3</sup> *North American Industry Classification System* — United States, 2012

<sup>4</sup> Excludes farms with fewer than 11 employees.

SOURCE: U.S. Bureau of Labor Statistics, U.S. Department of Labor

TABLE 5. Incidence rate<sup>1</sup> and number of nonfatal occupational injuries by selected industries and ownership, 2014

Industry <sup>2</sup>	NAICS code <sup>3</sup>	Incidence rate	Number of cases (thousands)
<b>All industries including state and local government<sup>4</sup></b> .....		3.2	3,486.4
<b>Private industry<sup>4</sup></b> .....		3.0	2,809.8
<b>Goods-producing<sup>4</sup></b> .....		3.6	703.3
<b>Natural resources and mining<sup>4,5</sup></b> .....		3.6	66.5
Agriculture, forestry, fishing and hunting <sup>4</sup> .....	11	5.2	49.4
Crop production <sup>4</sup> .....	111	5.2	19.8
Animal production <sup>4</sup> .....	112	6.8	13.8
Forestry and logging .....	113	—	—
Fishing, hunting and trapping .....	114	4.9	.3
Support activities for agriculture and forestry .....	115	4.2	12.9
Mining, quarrying, and oil and gas extraction <sup>5</sup> .....	21	1.9	17.0
Oil and gas extraction .....	211	—	—
Mining (except oil and gas) <sup>6</sup> .....	212	2.6	6.0
Support activities for mining .....	213	1.8	8.6
<b>Construction</b> .....		3.5	196.3
Construction .....	23	3.5	196.3
Construction of buildings .....	236	3.3	40.4
Heavy and civil engineering construction .....	237	2.9	26.2
Specialty trade contractors .....	238	3.7	129.8
<b>Manufacturing</b> .....		3.6	440.5
Manufacturing .....	31-33	3.6	440.5
Food manufacturing .....	311	4.4	66.1
Beverage and tobacco product manufacturing .....	312	5.6	11.0
Textile mills .....	313	2.9	3.5
Textile product mills .....	314	3.3	3.6
Apparel manufacturing .....	315	1.4	1.9
Leather and allied product manufacturing .....	316	3.3	.9
Wood product manufacturing .....	321	6.3	23.4
Paper manufacturing .....	322	2.7	10.4
Printing and related support activities .....	323	2.4	10.3
Petroleum and coal products manufacturing .....	324	1.6	1.9
Chemical manufacturing .....	325	2.1	17.2

See footnotes at end of table.

TABLE 5. Incidence rate<sup>1</sup> and number of nonfatal occupational injuries by selected industries and ownership, 2014  
— Continued

Industry <sup>2</sup>	NAICS code <sup>3</sup>	Incidence rate	Number of cases (thousands)
Plastics and rubber products manufacturing .....	326	4.4	29.4
Nonmetallic mineral product manufacturing .....	327	4.9	18.9
Primary metal manufacturing .....	331	4.8	20.0
Fabricated metal product manufacturing .....	332	4.5	66.6
Machinery manufacturing .....	333	3.6	40.6
Computer and electronic product manufacturing .....	334	1.1	11.7
Electrical equipment, appliance, and component manufacturing .....	335	2.8	10.9
Transportation equipment manufacturing .....	336	4.0	63.1
Furniture and related product manufacturing .....	337	4.5	15.9
Miscellaneous manufacturing .....	339	2.3	13.2
<b>Service-providing</b> .....		2.8	2,106.5
<b>Trade, transportation, and utilities<sup>7</sup></b> .....		3.5	770.5
Wholesale trade .....	42	2.9	159.7
Merchant wholesalers, durable goods .....	423	2.6	73.2
Merchant wholesalers, nondurable goods .....	424	3.8	73.7
Wholesale electronic markets and agents and brokers .....	425	1.6	12.7
Retail trade .....	44-45	3.5	404.9
Motor vehicle and parts dealers .....	441	3.3	58.5
Furniture and home furnishings stores .....	442	3.7	13.0
Electronics and appliance stores .....	443	1.3	5.5
Building material and garden equipment and supplies dealers .....	444	4.9	50.1
Food and beverage stores .....	445	4.3	92.0
Health and personal care stores .....	446	2.1	15.9
Gasoline stations .....	447	2.3	15.5
Clothing and clothing accessories stores .....	448	2.0	15.8
Sporting goods, hobby, book, and music stores .....	451	2.5	9.4
General merchandise stores .....	452	4.5	103.0
Miscellaneous store retailers .....	453	3.3	18.6
Nonstore retailers .....	454	1.8	7.7
Transportation and warehousing <sup>7</sup> .....	48-49	4.6	193.8
Air transportation .....	481	7.0	25.2
Rail transportation <sup>7</sup> .....	482	1.9	4.6
Water transportation .....	483	2.2	1.5
Truck transportation .....	484	4.4	64.9
Transit and ground passenger transportation .....	485	4.5	14.9
Pipeline transportation .....	486	1.5	.7
Scenic and sightseeing transportation .....	487	3.2	.6

See footnotes at end of table.

TABLE 5. Incidence rate<sup>1</sup> and number of nonfatal occupational injuries by selected industries and ownership, 2014  
— Continued

Industry <sup>2</sup>	NAICS code <sup>3</sup>	Incidence rate	Number of cases (thousands)
Support activities for transportation .....	488	3.4	19.9
Couriers and messengers .....	492	6.5	27.3
Warehousing and storage .....	493	5.0	34.3
Utilities .....	22	2.2	12.1
Utilities .....	221	2.2	12.1
<b>Information</b> .....		1.3	33.2
Information .....	51	1.3	33.2
Publishing industries (except Internet) .....	511	.9	6.2
Motion picture and sound recording industries .....	512	1.5	4.1
Broadcasting (except Internet) .....	515	1.3	3.3
Telecommunications .....	517	2.1	17.5
Data processing, hosting, and related services .....	518	.5	1.3
Other information services .....	519	.4	.8
<b>Financial activities</b> .....		1.2	82.1
Finance and insurance .....	52	.6	32.5
Monetary authorities - central bank .....	521	1.0	.2
Credit intermediation and related activities .....	522	.7	18.3
Securities, commodity contracts, and other financial investments and related activities .....	523	.2	1.8
Insurance carriers and related activities .....	524	.6	12.2
Real estate and rental and leasing .....	53	2.8	49.6
Real estate .....	531	2.4	30.6
Rental and leasing services .....	532	3.9	18.8
Lessors of nonfinancial intangible assets (except copyrighted works) .....	533	1.0	.2
<b>Professional and business services</b> .....		1.4	208.7
Professional, scientific, and technical services .....	54	.9	65.2
Professional, scientific, and technical services .....	541	.9	65.2
Management of companies and enterprises .....	55	1.0	20.2
Administrative and support and waste management and remediation services .....	56	2.5	123.3
Administrative and support services .....	561	2.3	103.9
Waste management and remediation services .....	562	5.0	19.4

See footnotes at end of table.

TABLE 5. Incidence rate<sup>1</sup> and number of nonfatal occupational injuries by selected industries and ownership, 2014  
 — Continued

Industry <sup>2</sup>	NAICS code <sup>3</sup>	Incidence rate	Number of cases (thousands)
<b>Education and health services</b> .....		4.0	612.1
Educational services .....	61	2.0	37.0
Educational services .....	611	2.0	37.0
Health care and social assistance .....	62	4.2	575.0
Ambulatory health care services .....	621	2.3	115.8
Hospitals .....	622	5.8	220.7
Nursing and residential care facilities .....	623	6.8	169.2
Social assistance .....	624	3.3	69.3
<b>Leisure and hospitality</b> .....		3.5	327.4
Arts, entertainment, and recreation .....	71	4.0	52.0
Performing arts, spectator sports, and related industries .....	711	4.6	12.6
Museums, historical sites, and similar institutions .....	712	3.8	3.8
Amusement, gambling, and recreation industries .....	713	3.8	35.6
Accommodation and food services .....	72	3.4	275.4
Accommodation .....	721	4.7	69.2
Food services and drinking places .....	722	3.1	206.2
<b>Other services</b> .....		2.4	72.5
Other services, except public administration .....	81	2.4	72.5
Repair and maintenance .....	811	3.0	33.9
Personal and laundry services .....	812	2.2	21.5
Religious, grantmaking, civic, professional, and similar organizations .....	813	1.9	17.1
<b>State and local government<sup>4</sup></b> .....		4.7	676.6
<b>State government<sup>4</sup></b> .....		3.8	149.3
<b>Service-providing</b> .....		3.8	145.6

See footnotes at end of table.

TABLE 5. Incidence rate<sup>1</sup> and number of nonfatal occupational injuries by selected industries and ownership, 2014  
 — Continued

Industry <sup>2</sup>	NAICS code <sup>3</sup>	Incidence rate	Number of cases (thousands)
<b>Education and health services</b> .....		3.5	70.1
Educational services .....	61	2.0	29.0
Educational services .....	611	2.0	29.0
Health care and social assistance .....	62	7.6	41.2
Hospitals .....	622	8.2	23.8
Nursing and residential care facilities .....	623	12.0	14.4
<b>Public administration</b> .....		3.9	68.7
Public administration .....	92	3.9	68.7
Justice, public order, and safety activities .....	922	5.5	39.1
<b>Local government<sup>4</sup></b> .....		5.1	527.3
<b>Goods-producing<sup>4</sup></b> .....		8.1	8.3
<b>Construction</b> .....		8.2	8.3
Construction .....	23	8.2	8.3
Heavy and civil engineering construction .....	237	8.2	8.0
<b>Service-providing</b> .....		5.0	519.0
<b>Trade, transportation, and utilities<sup>7</sup></b> .....		5.8	27.1
Transportation and warehousing <sup>7</sup> .....	48-49	6.8	16.3
Transit and ground passenger transportation .....	485	6.5	12.5
Utilities .....	22	4.8	10.8
Utilities .....	221	4.8	10.8

See footnotes at end of table.



TABLE 5. Incidence rate<sup>1</sup> and number of nonfatal occupational injuries by selected industries and ownership, 2014  
— Continued

Industry <sup>2</sup>	NAICS code <sup>3</sup>	Incidence rate	Number of cases (thousands)
<b>Education and health services</b> .....		4.1	258.2
Educational services .....	61	4.0	220.0
Educational services .....	611	4.0	220.0
Health care and social assistance .....	62	5.2	38.2
Hospitals .....	622	5.3	28.0
Nursing and residential care facilities .....	623	7.3	4.1
<b>Public administration</b> .....		6.5	213.0
Public administration .....	92	6.5	213.0
Justice, public order, and safety activities .....	922	8.6	76.0

<sup>1</sup> The incidence rates represent the number of injuries per 100 full-time workers and were calculated as:  $(N/EH) \times 200,000$ , where

N = number of injuries  
EH = total hours worked by all employees during the calendar year  
200,000 = base for 100 equivalent full-time workers (working 40 hours per week, 50 weeks per year)

<sup>2</sup> Totals include data for industries not shown separately.

<sup>3</sup> *North American Industry Classification System* — United States, 2012

<sup>4</sup> Excludes farms with fewer than 11 employees.

<sup>5</sup> Data for Mining (Sector 21 in the *North American Industry Classification System* — United States, 2012) include establishments not governed by the Mine Safety and Health Administration rules and reporting, such as those in Oil and Gas Extraction and related support activities. Data for mining operators in coal, metal, and nonmetal mining are provided to BLS by the Mine Safety and Health Administration, U.S. Department of

Labor. Independent mining contractors are excluded from the coal, metal, and nonmetal mining industries. These data do not reflect the changes the Occupational Safety and Health Administration made to its recordkeeping requirements effective January 1, 2002; therefore, estimates for these industries are not comparable to estimates in other industries.

<sup>6</sup> Data for mining operators in this industry are provided to BLS by the Mine Safety and Health Administration, U.S. Department of Labor. Independent mining contractors are excluded. These data do not reflect the changes the Occupational Safety and Health Administration made to its recordkeeping requirements effective January 1, 2002; therefore, estimates for these industries are not comparable to estimates in other industries.

<sup>7</sup> Data for employers in railroad transportation are provided to BLS by the Federal Railroad Administration, U.S. Department of Transportation.

NOTE: Because of rounding, components may not add to totals. Dash indicates data do not meet publication guidelines.

SOURCE: U.S. Bureau of Labor Statistics, U.S. Department of Labor

TABLE 6a. Incidence rates<sup>1</sup> of nonfatal occupational illnesses by major industry sector, category of illness, and ownership, 2014

Industry sector	Total cases	Skin diseases or disorders	Respiratory conditions	Poisonings	Hearing loss	All other illnesses
	Incidence rates per 10,000 full-time workers					
All industries including state and local government <sup>2</sup> .....	17.5	2.6	1.6	0.2	1.9	11.1
Private industry <sup>2</sup> .....	15.3	2.3	1.3	.2	1.9	9.6
Goods-producing <sup>2</sup> .....	26.0	3.3	1.2	.2	7.2	14.2
Natural resources and mining <sup>2,3</sup> .....	20.5	5.5	2.4	.4	1.6	10.6
Construction .....	8.2	2.0	.7	.1	.3	5.1
Manufacturing .....	35.0	3.6	1.2	.1	11.2	18.9
Service-providing .....	12.5	2.1	1.3	.2	.6	8.4
Trade, transportation, and utilities <sup>4</sup> .....	10.8	1.4	1.2	.1	1.3	6.8
Information .....	8.4	.5	.2	–	1.1	6.6
Financial activities .....	5.4	.6	.7	–	–	4.0
Professional and business services .....	7.9	1.5	.6	.2	.4	5.2
Education and health services .....	25.2	4.0	2.7	.1	.1	18.4
Leisure and hospitality .....	10.8	3.2	1.3	–	.1	5.8
Other services, except public administration .....	7.5	1.1	1.1	.2	.5	4.6
State and local government <sup>2</sup> .....	31.8	4.7	3.9	.6	1.8	20.7
State government <sup>2</sup> .....	32.8	3.5	4.1	.3	1.2	23.7
Local government <sup>2</sup> .....	31.4	5.2	3.8	.7	2.1	19.6

<sup>1</sup> The incidence rates represent the number of illnesses per 10,000 full-time workers and were calculated as: (N/EH) x 20,000,000, where

N = number of illnesses  
 EH = total hours worked by all employees during the calendar year  
 20,000,000 = base for 10,000 equivalent full-time workers (working 40 hours per week, 50 weeks per year)

<sup>2</sup> Excludes farms with fewer than 11 employees.

<sup>3</sup> Data for Mining (Sector 21 in the *North American Industry Classification System* — United States, 2012) include establishments not governed by the Mine Safety and Health Administration rules and reporting, such as those in Oil and Gas Extraction and related support activities. Data for mining operators

in coal, metal, and nonmetal mining are provided to BLS by the Mine Safety and Health Administration, U.S. Department of Labor. Independent mining contractors are excluded from the coal, metal, and nonmetal mining industries. These data do not reflect the changes the Occupational Safety and Health Administration made to its recordkeeping requirements effective January 1, 2002; therefore, estimates for these industries are not comparable to estimates in other industries.

<sup>4</sup> Data for employers in railroad transportation are provided to BLS by the Federal Railroad Administration, U.S. Department of Transportation.

NOTE: Because of rounding, components may not add to totals. Dash indicates data do not meet publication guidelines.

SOURCE: U.S. Bureau of Labor Statistics, U.S. Department of Labor

TABLE 6b. Number of cases of nonfatal occupational illnesses by major industry sector, category of illness, and ownership, 2014

Industry sector	Total cases	Skin diseases or disorders	Respiratory conditions	Poisonings	Hearing loss	All other illnesses
	Numbers of illnesses in thousands					
All industries including state and local government <sup>1</sup> .....	189.4	28.6	17.7	2.4	20.9	119.9
Private industry <sup>1</sup> .....	143.7	21.8	12.1	1.5	18.2	90.1
Goods-producing <sup>1</sup> .....	51.2	6.6	2.4	.3	14.1	27.9
Natural resources and mining <sup>1,2</sup> .....	3.8	1.0	.4	.1	.3	2.0
Construction .....	4.6	1.1	.4	.1	.2	2.8
Manufacturing .....	42.8	4.4	1.5	.2	13.7	23.0
Service-providing .....	92.5	15.2	9.8	1.2	4.1	62.2
Trade, transportation, and utilities <sup>3</sup> .....	23.6	3.1	2.6	.2	2.9	14.9
Information .....	2.1	.1	( <sup>4</sup> )	–	.3	1.7
Financial activities .....	3.8	.4	.5	–	–	2.9
Professional and business services .....	11.6	2.1	.9	.3	.6	7.6
Education and health services .....	38.9	6.1	4.1	.2	.1	28.3
Leisure and hospitality .....	10.1	3.0	1.2	–	.1	5.4
Other services, except public administration .....	2.3	.3	.3	.1	.2	1.4
State and local government <sup>1</sup> .....	45.7	6.8	5.6	.9	2.7	29.8
State government <sup>1</sup> .....	13.0	1.4	1.6	.1	.5	9.4
Local government <sup>1</sup> .....	32.7	5.4	4.0	.8	2.2	20.4

<sup>1</sup> Excludes farms with fewer than 11 employees.

<sup>2</sup> Data for Mining (Sector 21 in the *North American Industry Classification System* — United States, 2012) include establishments not governed by the Mine Safety and Health Administration rules and reporting, such as those in Oil and Gas Extraction and related support activities. Data for mining operators in coal, metal, and nonmetal mining are provided to BLS by the Mine Safety and Health Administration, U.S. Department of Labor. Independent mining contractors are excluded from the coal, metal, and nonmetal mining industries. These data do not reflect the changes the Occupational Safety and Health Administration made to its recordkeeping requirements effective January 1, 2002; therefore, estimates for these industries

are not comparable to estimates in other industries.

<sup>3</sup> Data for employers in railroad transportation are provided to BLS by the Federal Railroad Administration, U.S. Department of Transportation.

<sup>4</sup> Data too small to be displayed.

NOTE: Because of rounding, components may not add to totals. Dash indicates data do not meet publication guidelines.

SOURCE: U.S. Bureau of Labor Statistics, U.S. Department of Labor

TABLE 7. Incidence rates<sup>1</sup> of nonfatal occupational injuries and illnesses by major private industry sector and selected case types, 2012-2014<sup>2</sup>

Industry sector	Total recordable cases			Cases with days away from work, job transfer, or restriction									Other recordable cases		
				Total			Cases with days away from work <sup>3</sup>			Cases with job transfer or restriction					
	2012	2013	2014	2012	2013	2014	2012	2013	2014	2012	2013	2014	2012	2013	2014
Private industry <sup>4</sup> .....	3.4	3.3	3.2	1.8	1.7	1.7	1.0	1.0	1.0	0.7	0.7	0.7	1.6	1.6	1.5
Goods-producing <sup>4</sup> .....	4.1	3.9	3.8	2.3	2.2	2.2	1.2	1.2	1.1	1.1	1.0	1.0	1.8	1.7	1.7
Natural resources and mining <sup>4,5</sup> .....	3.9	3.9	3.8	2.3	2.4	2.3	1.4	1.5	1.3	.9	.9	1.0	1.5	1.6	1.5
Construction .....	3.7	3.8	3.6	2.1	2.2	2.0	1.5	1.5	1.3	.6	.7	.6	1.6	1.6	1.6
Manufacturing .....	4.2	4.0	4.0	2.3	2.2	2.2	1.1	1.0	1.0	1.3	1.2	1.2	1.9	1.8	1.7
Service-providing .....	3.2	3.1	3.0	1.6	1.6	1.6	1.0	.9	.9	.6	.6	.6	1.6	1.5	1.4
Trade, transportation, and utilities <sup>6</sup> .....	3.9	3.8	3.6	2.3	2.2	2.2	1.3	1.3	1.3	1.0	1.0	1.0	1.6	1.5	1.4
Information .....	1.4	1.5	1.4	.8	.9	.8	.6	.6	.6	.2	.2	.2	.6	.7	.6
Financial activities .....	1.3	1.3	1.2	.6	.6	.5	.4	.4	.4	.2	.2	.2	.7	.7	.7
Professional and business services .....	1.6	1.6	1.5	.8	.8	.8	.5	.5	.5	.3	.3	.3	.8	.8	.7
Education and health services .....	4.5	4.4	4.2	2.1	2.0	2.0	1.2	1.2	1.1	.9	.8	.8	2.4	2.4	2.2
Leisure and hospitality .....	3.9	3.8	3.6	1.6	1.6	1.5	1.0	1.0	1.0	.6	.6	.6	2.3	2.2	2.1
Other services, except public administration .....	2.5	2.5	2.5	1.3	1.2	1.2	.9	.8	.9	.4	.4	.4	1.2	1.3	1.2

<sup>1</sup> The incidence rates represent the number of injuries and illnesses per 100 full-time workers and were calculated as: (N/EH) x 200,000, where

N = number of injuries and illnesses  
 EH = total hours worked by all employees during the calendar year  
 200,000 = base for 100 equivalent full-time workers (working 40 hours per week, 50 weeks per year)

<sup>2</sup> Estimates for 2014 represent a break in series as a result of the incorporation of the 2012 North American Industry Classification System (NAICS). Comparison of estimates for 2014 and prior years is not advised below the sector level due to changes in industry classifications.

<sup>3</sup> Days-away-from-work cases include those that result in days away from work with or without job transfer or restriction.

<sup>4</sup> Excludes farms with fewer than 11 employees.

<sup>5</sup> Data for Mining (Sector 21 in the *North American Industry Classification System* — United States, 2012) include establishments not governed by the Mine Safety and Health Administration rules and reporting, such as those in Oil and Gas Extraction and related support activities. Data for mining operators in coal, metal, and nonmetal mining are provided to BLS by the Mine Safety and Health Administration, U.S. Department of Labor. Independent mining contractors are excluded from the coal, metal, and nonmetal mining industries. These data do not reflect the changes the Occupational Safety and Health Administration made to its recordkeeping requirements effective January 1, 2002; therefore, estimates for these industries are not comparable to estimates in other industries.

<sup>6</sup> Data for employers in railroad transportation are provided to BLS by the Federal Railroad Administration, U.S. Department of Transportation.

NOTE: Because of rounding, components may not add to totals.  
 SOURCE: U.S. Bureau of Labor Statistics, U.S. Department of Labor