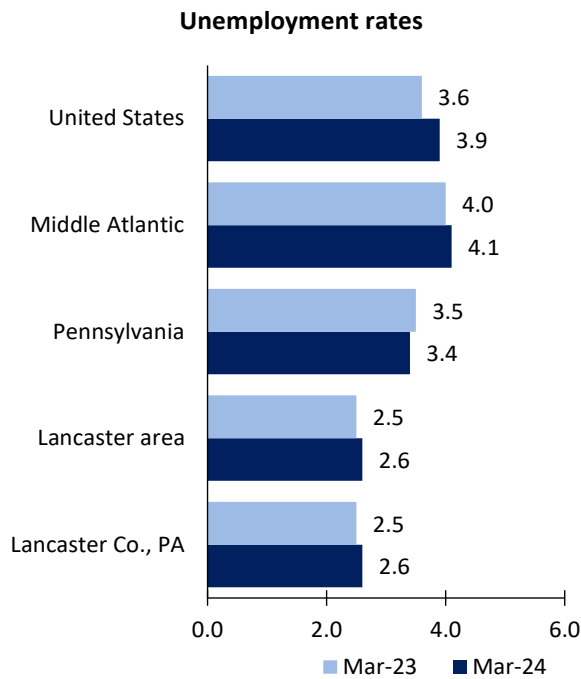


Lancaster, PA, area Economic Summary

Updated May 03, 2024

This summary presents a sampling of economic information for the area; supplemental data are provided for regions and the nation. Subjects include **unemployment, employment, wages, prices, spending, and benefits**. All data are not seasonally adjusted and some may be subject to revision. Area definitions may differ by subject. For more area summaries and geographic definitions, see www.bls.gov/regions/economic-summaries.htm.

Unemployment rates for the nation and selected areas



Source: U.S. BLS, Local Area Unemployment Statistics.

Average weekly wages for all industries by county

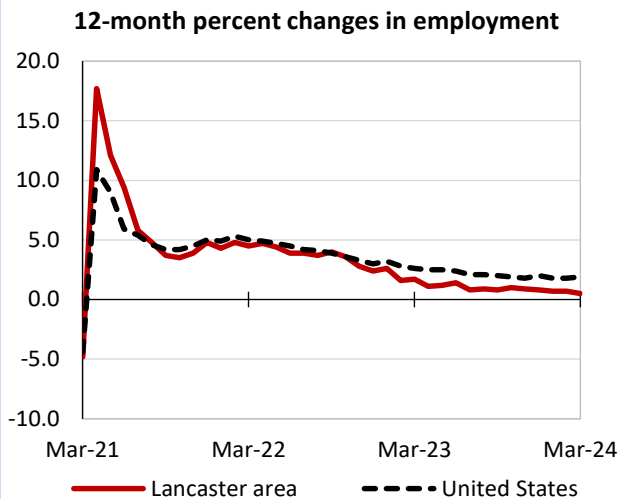
Lancaster area, third quarter 2023

(U.S. = \$1,334; Area = \$1,092)



Source: U.S. BLS, Quarterly Census of Employment and Wages.

Over-the-year changes in employment on nonfarm payrolls and employment by major industry sector



Source: U.S. BLS, Current Employment Statistics.

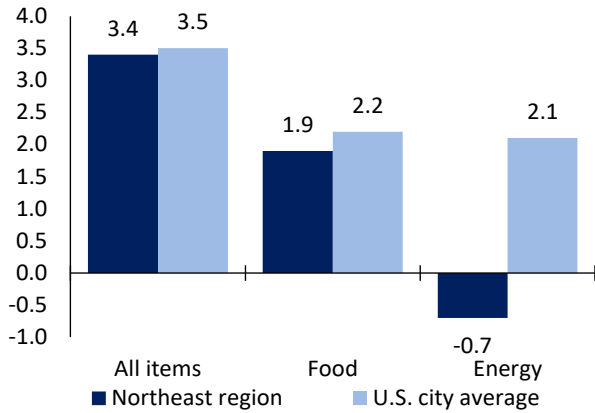
| Lancaster area employment (number in thousands) | Mar. 2024 | Change from Mar. 2023 to Mar. 2024 | |
|--|-----------|------------------------------------|---------|
| | | Number | Percent |
| Total nonfarm | 262.9 | 1.2 | 0.5 |
| Mining, logging, and construction | 18.6 | -0.5 | -2.6 |
| Manufacturing | 37.2 | -0.8 | -2.1 |
| Trade, transportation, and utilities | 59.0 | -0.1 | -0.2 |
| Information | 2.7 | -0.1 | -3.6 |
| Financial activities | 10.5 | 0.0 | 0.0 |
| Professional and business services | 26.0 | -0.9 | -3.3 |
| Education and health services | 51.5 | 2.0 | 4.0 |
| Leisure and hospitality | 24.7 | 1.2 | 5.1 |
| Other services | 12.7 | 0.1 | 0.8 |
| Government | 20.0 | 0.3 | 1.5 |

Source: U.S. BLS, Current Employment Statistics.



Over-the-year change in the prices paid by urban consumers for selected categories

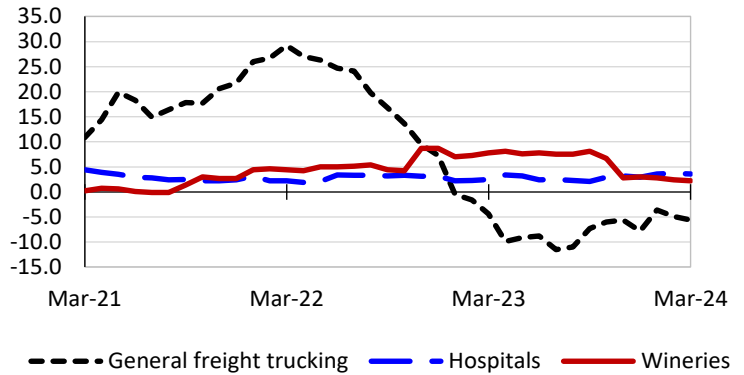
12-month percent change in CPI-U, March 2024



Source: U.S. BLS, Consumer Price Index.

Over-the-year changes in the selling prices received by producers for selected industries nationwide

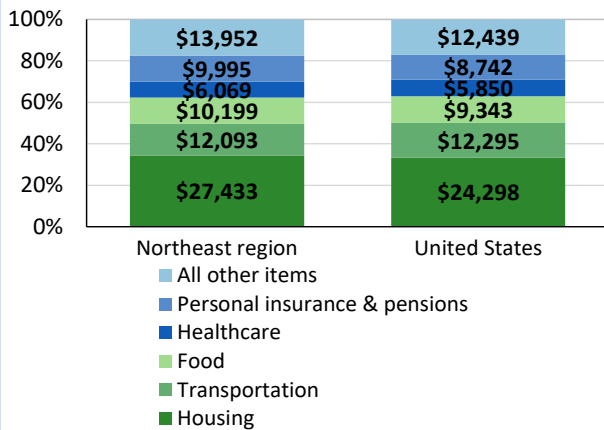
12-month percent changes in PPI



Source: U.S. BLS, Producer Price Index.

Average annual spending and percent distribution for selected categories

Average annual expenditures, United States and Northeast region, 2022



Source: U.S. BLS, Consumer Expenditure Survey.

Average hourly wages for selected occupations

| Occupation | Lancaster area | United States |
|------------------------|----------------|---------------|
| All occupations | \$26.71 | \$31.48 |
| Registered nurses | 40.27 | 45.42 |
| Office clerks, general | 20.08 | 20.94 |
| Tellers | 18.04 | 18.68 |
| Cooks, restaurant | 15.56 | 17.34 |
| Bartenders | 13.98 | 17.83 |
| Childcare workers | 13.85 | 15.42 |

Source: U.S. BLS, Occupational Employment and Wage Statistics, May 2023.

Employer costs per hour worked for wages and selected employee benefits by geographic division

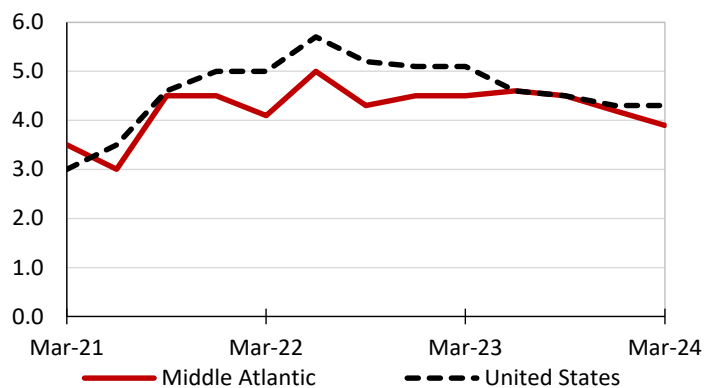
| Private industry, December 2023 | Middle Atlantic | United States |
|---------------------------------|-----------------|---------------|
| Total compensation | \$52.53 | \$43.11 |
| Wages and salaries | 36.44 | 30.33 |
| Total benefits | 16.09 | 12.77 |
| Paid leave | 4.34 | 3.26 |
| Vacation | 2.19 | 1.67 |
| Supplemental pay | 1.79 | 1.71 |
| Insurance | 3.94 | 3.14 |
| Retirement and savings | 2.16 | 1.50 |
| Legally required benefits | 3.86 | 3.17 |

(1) The states that compose the Middle Atlantic census division are: NJ, NY, and PA.

Source: U.S. BLS, Employer Costs for Employee Compensation.

Over-the-year changes in wages and salaries

12-month percent changes in ECI



Source: U.S. BLS, Employment Cost Index.

